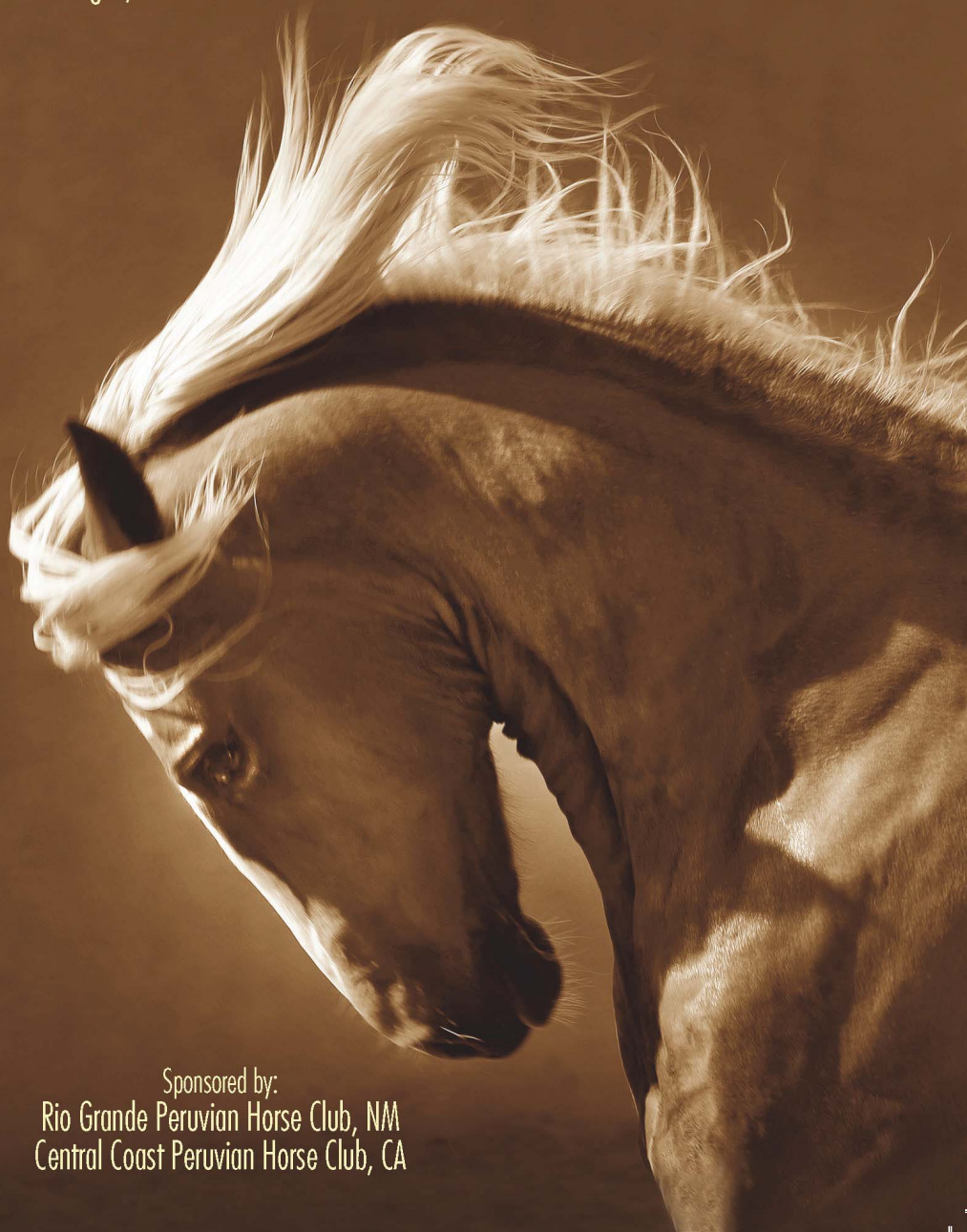


# GOLD RUSH CLASSIC XII

June 29, 30, July 1, 2012

South Point Events Center

Las Vegas, NV



Sponsored by:  
Rio Grande Peruvian Horse Club, NM  
Central Coast Peruvian Horse Club, CA



**Central Coast  
3rd Annual Show**



**Rio Grande  
11th Annual Show**

### **Show Approval & Points**

The **2012 Gold Rush Peruvian Horse Classic** is conducted under the rules of the North American Peruvian Horse Association (NAPHA) as an APP (All Peruvian Paso) Championship Show. The show is drug free with testing. Only horses with registration certificates issued by NAPHA, PPHRNA, AAOBPPH, or the PHAC may participate.

The **Gold Rush Peruvian Horse Classic** is also approved by the Peruvian Horse Association of Canada and qualified entries will receive annual and lifetime PHAC points. **SCPPHC members** earn points toward the annual High Point and El Merito Awards and lifetime El Supremo Awards. A complete explanation of the point system can be found in the SCPPHC Membership Handbook and on the website at [scpphc.org](http://scpphc.org)



**The Gold Rush Classic would like to thank its Prospector Sponsors:**

**LA ESTANCIA ALEGRE**

**RANCHO RIO ALEGRE**

**Taurus Food Products**



**D Ranch**

**Thanks to Santa Ynez Saddlery & Peruvian Horse Quarterly  
for their donation to the Versatility High Point Award**



## Table of Contents



Show Approval & Points.....	2
Show Staff & Contact Information .....	4
<b>Deadlines.....</b>	<b>4</b>
Welcome - Our Judges.....	5
Fees .....	6
Financial Information - Payment Policy, Late Fee, Refunds.....	7
Gold Rush Classic Prospector Sponsorships.....	8
Class Sponsorships, Show Program Ads, Vendors .....	9
Show Rules.....	10-11
Health & Brand Inspection Requirements .....	12
Barn Check-in & Related Information .....	13
Show & Class Schedule .....	14-17
Class Notes & Information - <i>Please Read</i> .....	18-21
Peruvian Reining Division .....	22-23
Freestyle Reining Class.....	24-25
Junior Division Information .....	Inside Back Cover
Bozal Horses .....	Inside Back Cover
Special Awards.....	Inside Back Cover
Hotel Information .....	Back Cover
Cover Photo: Tony Stromberg	

### SHOWGROUNDS

*Michael Gaughan's*



**(702) 797-8005 (702) 797-8006 (fax)**

Located just east of I-15 (south of I-215) at S. Las Vegas Blvd. & Silverado Ranch Blvd. Take Exit 31. Climate-controlled 4400 seat 250 X 125 arena & 90 X 270 indoor practice, huge concourse for vendors & parties. Jumbotron, saloon, snack bar, room service to barn, 1200 climate-controlled stalls with door options, individual wash racks & warm/cold water, free ice, 24 hr. security, feed store on site, vet's office on site, unload assistance & escort to stalls, excellent assigned trailer parking, exhibitor's secure access to barn (check on horses anytime), hotel rooms 5 minute walk to arena & much more!



## 2012 GOLD RUSH PERUVIAN HORSE CLASSIC DOUBLE SHOW

June 29, 30, July 1, 2012 \* South Point Event Center, Las Vegas NV

### Show Officials

**RGPHC JUDGE: Jose Risso Montes**  
**CCPHC JUDGE: Rolando Garcia Bertoncini**  
**Freestyle Reining Judges:**

**Jose Risso Montes, Rolando Garcia Bertoncini, Nicholas Breaux**

Carded Show Steward:	Irene Taylor	
Show Committee Co-chair:	Barbara Windom	505.852.0444
Show Committee Co-chair:	Eleanor Palmisano	970.314.4559
Promotion & Publications:	Kelly Powers	209.324.4213
Show Secretary:	Nicole Pichel	951.541.1586
Barn Superintendent:	Carole Hackett	951.442.4550
Gate Steward:	Clyde James	
Freestyle Reining Event:	TBA	
Show Manager:	Officers & Directors of RGPHC & CCPHC	
Acting Show Manager:	Carole Hackett	951.442.4550
Announcer:	Carolyn Mittrick	
Ringmaster:	Nicholas Breaux	
Photographer:	Don Stine	
Veterinarian:	Desert Pines Equine Hosp.	702.645.2247
Farrier:	<i>On Call at Show</i>	
Show Program Ads:	Kelly Powers	209.324.4213
	Victor diSuvero	505.982.2622
	Dianna Whisenant	818.404.0757
Sponsorships – CCPHC:	Kelly Powers	209.324.4213
Sponsorships – RGPHC:	Barbara Windom	505.852.0444

### **Important Deadlines!**

Deadline for Show Program Ads Needing Layout:	May 25, 2012
Deadline for Show Program Ads - Camera Ready:	June 1, 2012
Deadline to Avoid Late Penalties:	June 8, 2012
Deadline to Pre-enter Past Champions (required):	June 19, 2012

### **Special Features & Events**

**NEW!!! Freestyle Reining!** *See page 24-25 for details*

**Liberty Horse** - Come watch magnificent Peruvian Horses in their natural glory strut their stuff to music at Liberty! Winner takes home beautiful neck ribbon!

**High Point Novice Award—High Point Crystal Horse—High Point Versatility**

**High Point Bozal—AOTR Division WITH Championships!** See details on page 27.



## RIO GRANDE PERUVIAN HORSE CLUB 11TH ANNUAL SHOW CENTRAL COAST PERUVIAN HORSE CLUB 3RD ANNUAL SHOW



**T**he **Gold Rush Peruvian Horse Classic** is the Combined Regional Championship Show of the Rio Grande Peruvian Horse Club (New Mexico) and the Central Coast Peruvian Horse Club (California). Although functioning as one show in class structure, each club hosts its own judge, and the two non-conferring judges award separate placings. Individual championships, points, and prizes are awarded for each club as well as the overall awards of Gold Rush Classic Versatility Horse, Gold Rush Classic High Point Crystal Horse, Gold Rush Classic High Point Bozal Horse, Gold Rush Classic High Point Novice, Gold Rush Classic High Point Breeder, and Gold Rush Classic High Point Exhibitor. Plus there are TWO Stakes classes and Champagne Cash Class, as well as a Freestyle Reining Class awarding thousands of dollars in prize money!

### Why a DOUBLE Show?

A double show offers many great advantages and savings: great competition, one trip for your horses to attend TWO shows, one hotel bill, one fuel bill, fewer days away from the ranch. Plus, the show fees are substantially lower than if attending two shows separately. For example, the fee for a regular class is \$50. This translates to a class fee of only **\$25 per class**, per show! And as a special savings for those traveling from afar, you may arrive as early as 8:00 a.m. Wednesday June 27 with NO charge for extra stall nights!

### Our Judges

Our Rio Grande Peruvian Horse Club judge will be the esteemed **Jose Risso Montes** of Lima, Peru. Jose "Pepe" Risso is a 4th generation Peruvian Horse breeder. He established his breeding program in 1982 and has been an international judge since 1985, having judged national shows in 11 different countries.

Judging for the Central Coast Peruvian Horse Club will be **Rolando Garcia Bertoncini**, of Panama City, Republic of Panama. Sr. Garcia was born and raised around horses and has over 30 years of experience with Peruvian Pasos. He is the only qualified Judge in Panama and the first and only non-Peruvian individual recognized by the ANCP CPC as a certified judge. He has been President of the APCPCPP 3 times.



### WIN BIG IN VEGAS!

Las Vegas does everything in a BIG way, and so does the Gold Rush Classic! The Grand Prize this year, is a \$400.00 Gift Certificate to Santa Ynez Saddlery & Peruvian Horse Quarterly, which will go to the Versatility Horse winner of the GRC 2012!

Both Pro and Am riders are eligible, as are stallions/mares/geldings, to put the odds in your favor to win! Don't miss out on this incredible prize! With skill and a little help from Lady Luck, you could be the Vegas Big Winner!



## Fees



### Class Fees

Regular Class	\$ 50.00	
Junior Classes	\$ 40.00	
Lead Line	FREE	
Champagne Cash Class	\$ 50.00	\$300 Purse—Paid through 3rd
Liberty Horse—Limit 10	\$ 50.00	
Gelding Stakes	\$100.00	<i>Fees go to purse</i>
Amateur Stakes	\$100.00	<i>Fees go to purse</i>
Saddle Switch Stakes	\$60.00	
Freestyle Reining Class	\$125.00	
Produce of Dam - 2 Horses only	\$ 60.00	
Get of Sire – 3 Horses only	\$ 65.00	
Rancho Conjunto – 3 Horses only	\$ 65.00	
Premio Aficion – 3 horses only	\$ 65.00	
Best Gaited/Best Bozal	\$ 60.00	
Championships	\$ 60.00	
Ch of Ch Classes	\$ 60.00	
Ch. Of Ch.— if only class entered	\$100.00	

• **Returning Champions & Champions of Champions who wish to enter the Champion of Champions classes directly MUST pre-enter by June 19th.**

### Stalls

Horse OR Tack - Wed-Mon am	\$165.00	including 4 bags shavings
Horse or Tack, entered after 6-8-12	\$180.00	including 4 bags shavings (South Point requires 4 bags per <b>EACH</b> stall = \$125 stall fee, \$40 initial bedding)

• **Absolutely NO arrivals before 8 a.m. Tues June 26; MUST vacate by 10:00 a.m. on Mon July 2nd**

• **End Stalls are reserved for Prospector Sponsors until released**

### General Fees

Exhibitor Fee, per horse	\$35.00	- Includes Office fee \$10, Drug testing fee \$10, Security Fee \$15
Exhibitor Fee, per horse after 6/8/12	\$55.00	Includes Late Fee of \$20
Shavings – per bag	\$10.00	Must purchase from South Point!
Hay		<b>Market price</b> —purchase from South Point!

**RV Hook Ups:** Oasis Las Vegas RV Resort. Go to [www.oasislasvegassrvresort.com](http://www.oasislasvegassrvresort.com) for directions and information. For reservations, call 1-800-566-4707. *No RVs are allowed anywhere on the South Point property.*

**Thursday Night: FREE! “Welcome to Las Vegas Party!” on the Arena Concourse.**  
**Please reserve number of attendees on horse show entry form.**



## Funds & Finances



### Funds

All payments must be made in US funds. All prize money will be awarded in US funds.

### Visa/MasterCard

The Gold Rush Classic gladly accepts your Visa/MasterCard! Charge all your show-related expenses - stall fees, shavings, hay, classes, etc. *We regret that we cannot extend this Visa/MC service to our Canadian exhibitors at this time.*

### Payment Policy

- The Gold Rush Classic cannot extend credit of any kind to anyone—NO EXCEPTIONS. All entries must be paid in full by cash, good check, money order, cashier's check, or Visa/MC at the time the entry is submitted.
- Faxed entries (505-852-0743) MUST HAVE a valid Visa/MC number to be accepted.
- Any entry received without proper payment and/or copies of registration papers will be considered incomplete and may therefore be subject to Late Fees.
- If an exhibitor desires to add classes, horses, hay, bedding, or any other expense during the show, these must be paid for immediately, or the Show Treasurer must be given a valid Visa/MC number or a signed, currently dated blank good check.

### Outstanding Debts

- Anyone owing a debt 60 days past due from the date of the first billing to NAPHA or one of its approved shows may not be allowed to show in a NAPHA approved show in any capacity, including owner, trainer, rider, handler, etc.
- No exhibitor who owes an outstanding debt to the CCPHC or RGPCH for any reason will be allowed to exhibit his/her horses until the balance is paid in full.

### Late Fees

- A late charge of \$20.00 will be added to each Entry Fee after June 8. This charge will also be assessed on incomplete entries after June 8 (e.g., those without copies of registration papers or full payment), regardless of when the entry was received.

### Championship Classes, Champions of Champions, Best Gaited, Best Bozal

- Horses qualifying for these classes will be automatically entered and charged a fee. Please notify the show office if you do not wish to enter the appropriate Championship Class, otherwise fees will be charged.

### Refunds and Substitutions

- **Valid, written veterinary excuse required for refunds!**
- Before the show, pre-entered horses: Class and stall fees refundable. The office fee, drug test fee, security fee are NOT refundable.
- At show: Refunds for pre-entered classes ONLY if the horse has not already entered them. No other refunds.
- Refunds are given in US funds.
- If a horse is entered by June 8 but then is unable to perform, another horse may be substituted at no additional fee.

## Become a GRC Prospector!

### Level 1: Gold Sponsor - \$1500 – Includes two copies of show program

- Logo and link from goldrushclassic.com
- Logo included on GRC promotions, premium list, and show program
- One page downloadable flyer (supplied in PDF format) on the GRC website
- Preferred stalls, as available, for our Ranch Prospectors
- PLUS, choose *up to* **\$1500 in promotions** from our list below!

### Level 2: Silver Sponsorship - \$1000 – Includes two copies of show program

- Logo and link from goldrushclassic.com - Logo included on GRC promotions, premium list, and show program - One page downloadable flyer (supplied in PDF format) on the GRC website - PLUS, choose *up to* **\$1000 in promotions** from our list below!

### Level 3: Striker - \$750 - Includes one copy of show program

- Logo and link from goldrushclassic.com
- PLUS, choose *up to* **\$750 in promotions** from our list below!!

### Level 4: Blaster - \$500 – Includes one copy of show program

- Logo and link from goldrushclassic.com
- PLUS, choose *up to* **\$500 in promotions** from our list below!!

### Level 5: Digger - \$250 – Includes one copy of show program

- Choose *up to* **\$250 in promotions** from our list below!

### Level 6: Claim Jumper! - \$450 Great value for our Corporate Prospectors!

- Logo and link from goldrushclassic.com 15 second commercial (supplied by sponsor) on Jumbotron
- One banner placement (supplied by sponsor) placed in arena
- One page downloadable flyer (supplied in PDF format) on the GRC website Includes one copy of show program
- *A 30 second commercial may be substituted for an additional \$150. Purchase show program ads and all other promotions separately.*

- A- \$800 Double booth on arena concourse (20' wide)
- B- \$600 Single booth on arena concourse (10' wide)
- C- \$200 Private table in reserved area of Arena bar (with incredible view to the arena!)
- D- \$100 *Per Banner Placement* – Banner (supplied by sponsor) placed in arena
- E- \$50 Samples and/or flyers (supplied by Sponsor) at GRC Booth and exhibitor packets
- F- \$500 30 second commercial (supplied by sponsor) on Jumbotron
- G- \$350 15 second commercial (supplied by sponsor) on Jumbotron
- H- \$325 Full Page - Four Color
- I- \$175 Full Page B & W
- J- \$175 Half Page Four color
- K- \$100 Half Page –B & W
- L- \$65 Quarter Page B & W
- M- \$50 Business Card
- N- \$50 One page downloadable flyer (supplied in PDF format) on the GRC website
- O- \$15 Special Commemorative Gold Rush Classic Souvenir

## Class Sponsorships

*Sponsors Will Be Invoiced—No need to pay now!*

Sponsorship contacts:

- Dianna Whisenant 818.404.0757 — All clubs
- Barbara Windom 505.852.0444 — RGPHC
- Eleanor Palmisano 970.314.4559 & Kelly Powers 209.324.4213 — CCPHC

Regular Class	\$35.00
Championship	\$45.00
RGPHC High Pt. Jr. 6-12 & 13-18	\$50.00
CCPHC High Pt. Jr. 6-12 & 13-18	\$50.00
Best Gaited or Best Bozal	\$55.00
Champion of Champions	\$55.00
GRC Versatility Horse Award	\$55.00
GRC High Point Crystal Horse	\$55.00
GRC High Point Bozal Horse	\$55.00
GRC High Point Novice	\$55.00
GRC High Point Exhibitor	\$55.00
GRC High Point Breeder	\$55.00

## Show Program Advertising

*Advertisers Will Be Invoiced—No need to pay now!*

**Deadline 5/25/11 for ads needing layout or 6/1/11 for camera ready ads.**  
To place an ad or for ad information, contact Eleanor Palmisano at 970.314.4559, cdpranch@msn.com or Kelly Powers, Kelly@phquarterly.com

Full Page Color:	\$325.00
Full Page Black & White:	\$175.00
Half Page Black & White:	\$100.00
Half Page Color:	\$175.00
Business Card:	\$50.00
Inside Front Cover:	\$450.00
Inside Back Cover:	\$450.00

## Corporate Sponsorships Are Available!

Please see us on the web at:

[www.goldrushclassic.com](http://www.goldrushclassic.com) or call 970.314.4559

## Vendors

- 10 X 10 Booth Space: \$600.00. 10 X 20 Booth Space: \$800.00
- Additional 10 X 10 Space: \$200 per each additional 10 X 10 space.
- Jumbotron commercials are available for \$400 - see contract for details!
- Please contact Eleanor Palmisano at 970.314.4559 (cdpranch@msn.com) for Vendor Contract and complete information. ALL Vendors must apply and sign contract.
- All Vendor Applications MUST be completed and reserved by June 1, 2012 and all requirements and balance of payment MUST be received by June 15, 2012.
- *Vendor application also available at [www.goldrushclassic.com](http://www.goldrushclassic.com)*

## **Rules & Show Standards**

**NAPHA Rules:** The Gold Rush Peruvian Horse Classic is operated in accordance with the current official RULES AND REGULATIONS OF HORSE SHOWING AND PERUVIAN PASO BREED STANDARDS of the NORTH AMERICAN PERUVIAN HORSE ASSOCIATION effective **April 2012**. Every person who participates in the show is responsible for a knowledge of, and is subject to, these NAPHA rules. Copies available through the NAPHA office or at [www.napha.net](http://www.napha.net)

- This show will confer a minimum of DOUBLE POINTS for the NAPHA Medallon de Plata, Medallon de Oro, and High Point Performance Horse Awards. Everything is being done to conduct the show on the highest possible plane and for the pleasure of exhibitors and spectators. The best adjudicating officials to be found are selected and they will place awards upon the horses as they see them presented in the arena, without regard to previous records or performance.

NAPHA • PO Box 2187 - Santa Rosa, CA 95405 - Phone: 707-544-5807

**Declaration of Amateur Status:** Anyone competing in the Amateur Performance Division is required to have a written Amateur Declaration on file with the PPHRNA. Forms will be available at the Show Office or may be downloaded from **[www.napha.net](http://www.napha.net)**

**Drug Free Show/No Prueba Funcional:** The Gold Rush Classic is conducted under the drug-free rules of NAPHA and will do random testing. There is no Prueba Funcional.

### **General Rules**

#### **Judges' Authority:**

- The Judges have the authority to place any horse in whatever position he/she thinks the merit of the horse justifies. Any exhibitor desiring to discuss his placing with a Judge must **FIRST** obtain permission from the Show Steward.
- The Judges *do not confer* and make all placings for their respective shows independently, with the exception of our exhibition classes, Class 42 Champagne (only 1 set of awards) Liberty Horse 49 (team judged, only 1 ribbon), Freestyle Reining 50 (one set of awards, 3 judges)
- The Gold Rush Classic, in the interest of conducting an orderly and efficient show, supplies its Judges with a set of recommended procedures for conduct of the double show, which will be made available to all exhibitors. However, these are suggestions *only* and may not be construed to be binding requirements upon the Judges, with the exception of the requirement of no conference except as stated above.
- In the event that a judge is unable perform his/her duties, the CCPHC and RGPHC reserve the right to substitute an equally qualified judge.

**Cones Spacing:** Spacing between cones in the performance division classes shall be at least 8 feet apart, and multiple circles per cone within the serpentine is prohibited.

**Post Entries:** Post Entries will be allowed. The Show Secretary will accept class entries up to 3 classes prior to the class for which entry is requested. ***Past Champions & National Champions of Champions MUST be pre-entered by June 19th.***

**Registration Requirements:** Only horses with registration certificates issued by NAPHA, PPHRNA, AAOBPPH or the PHAC may participate. A copy of the registration papers for each horse, MUST BE SUBMITTED with the entry form. Horses are *not considered entered* until the Show Secretary has verified ownership and registration.

**To Keep on Schedule, Class Calls Will Be Strictly Adhered To:** There will be 3 minutes allowed after the gate is opened; 5 minutes for tack change, which must be requested to the announcer as far ahead of time as possible; 5 minutes for a time out for a tack repair/breakage. A maximum of 2 minutes may be added to the gate call. Our gate stewards will be checking tack and correct attire. *Please plan ahead and avoid rushing!*

**Special Tack Exception:** A side saddle of appropriate type may be used by a female rider of at least age 13 years in any bit class. (Not permitted to be used with bozal horses.) A white safety apron that covers the stirrup leg to the ankle is allowed or of a color to coordinate with outfit.

**STALLIONS** age 4 & over **MUST** be registered as Breeding Stallions to be shown.

**Conduct and Safety:**

- The Gold Rush Classic expects the highest standard of ethics from its exhibitors and those persons under their authority and will tolerate no act of disobedience or discourtesy toward any show official, under penalty of disqualification or expulsion from the show. Courtesy will be shown fellow exhibitors and the viewing public at all times.
- Cruelty to any horse, by any person, at this show will NOT be tolerated.
- Exhibitors shall at all times take whatever steps are necessary to protect themselves, their horses, and the viewing public. Please be especially careful in the warm-up arena and gate areas. **SUPERVISE YOUR JUNIORS!**
- See Special Notes for Juniors on page 27. *Helmets required for 18 & under in ALL classes!*

**Showgrounds Rules:**

- **Responsibility:** Entries are accepted with the understanding that NAPHA, participating clubs, & showgrounds will not be held responsible for any loss, personal injury, or damage to horses exhibited or for any article of any kind or nature that may be lost or destroyed or in any way damaged. All horses shall be under the control and direction of the Show Committee but solely at the risk of the exhibitor, who will be responsible for any injury that may be occasioned to any person or animal or damage to any property while on the grounds by any horse owned or exhibited by him and shall indemnify the management against all claims or damages of any kind or nature, including attorney fees and court costs, that may grow out of any injury occasioned by any horse owned or exhibited by him or arising from any cause whatever, including the negligence of himself or any other person, including the person in charge of any such horse.
- **ABSOLUTELY NO PETS ALLOWED IN HOTEL OR STABLE AREA.** (except service animals such as Seeing Eye Dogs.)
- **NO** stall decorations allowed. NO items, including chairs, may be left in the aisle when away from the stalls, per fire code. You may purchase a booth for a display, see Vendors page 9.
- **ABSOLUTELY NO SMOKING IN THE BARN!** The South Point Equestrian Center has a ZERO TOLERANCE POLICY concerning smoking in the barn! *Exhibitors in violation of this fire marshal ordinance and South Point policy may be asked to leave the show with NO refunds of any kind given.*

## Information Concerning Your Horses

### CRITICAL! PLEASE READ ~ Health Requirements & Brand Inspection

- **ALL** horses, including Nevada horses, are required to have a Health Certificate issued within 30 days of the show stating that your horses are in good health and free from disease. You must also have a negative Coggins (EIA) test for each horse **within six months prior to the show**.
- All horses, whether branded or not, must comply with the Nevada brand regulations. To enter Nevada, you must comply with your state of origin's requirements for brand inspection. If your state of origin does not require brand inspection on horses, then you should have proof of ownership accompanying them. **ALL DOCUMENTS MUST ADEQUATELY IDENTIFY THOSE ANIMALS IN YOUR POSSESSION. IF NOT, YOU MAY BE SUBJECT TO FINES OR SEIZURE.**
- *For Nevada residents*, a current valid brand inspection certificate is required and must be in your possession. Nevada residents should have proof of ownership in possession at all times when transporting livestock, both to leave the state and to cross brand inspection district lines. Horse Transportation Cards may be issued in lieu of Brand Inspection Certificates and are good statewide.
- **ALL VEHICLES - REPEAT! ALL VEHICLES! - HAULING LIVESTOCK, INCLUDING HORSES, ARE REQUIRED TO STOP AT ALL NEVADA HIGHWAY PATROL COMMERCIAL VEHICLE INSPECTION STATIONS (IF OPEN).** The Nevada Department of Agriculture also maintains uniformed officers in marked cars to enforce compliance.
- **Exhibitors MUST show their veterinary & brand inspection or identification papers to the Barn Superintendent (or to the Security Officer if after hours) BEFORE unloading their horses.** Any exhibitor arriving without the required veterinary & brand inspection or identification papers will **NOT** be allowed to unload until the show is given permission by the Nevada Department of Agriculture. *Please note that this could be impossible to receive with late or weekend notice!*
- *Canadian Exhibitors:* Be alert to any new requirements for horses entering the U.S.
- It is advisable to check with the Nevada Department of Agriculture (located in Elko, NV) for any possible last minute changes or additions to the above requirements. Please call **775-738-8076**.
- All horses are subject to an obligatory physical examination by the Show Veterinarian, free of charge, as a safeguard against communicable disease.

### Are you bringing a horse to sell at the show?

- Nevada state law requires a Brand Inspection of ALL livestock prior to crossing any District Boundary Lines, including State Lines.
- Brand Inspection is also required on any Change of ownership of livestock. You will need to have a current Brand Inspection before leaving the State of Nevada.

## **Stall/Barn Information**

### **Barn Check In**

- Regular stall check-in begins Wednesday June 27th at 8:00 a.m.
- NO EARLY ARRIVALS ALLOWED at the South Point Equestrian Center.
- Security will be on duty from 8:00 p.m. to 6:00 a.m. beginning Wednesday June 27th and ending Monday morning July 2nd. Checkout is 10:00 a.m. on Monday July 2nd.
- Each horse must be stalled separately, with the exception of mares with nursing foals.
- *No changes* shall be made from assigned stalls without the Barn Super's permission.
- First bedding of 4 bags shavings is included with EACH horse and tack stall as a South Point requirement. No outside shavings allowed. All shavings MUST be purchased from the South Point Feed Store. *Note: Stalls are on asphalt, barn aisles are cement floors.* Hay may be purchased directly from South Point at market price.
- The main arena is not available on Tuesday, but the warm-up arena will be available.

### **Stall Decorations**

- The general public is not allowed into the barn areas. South Point policy allows no barn decorations, staples, nails, or tape on the stalls. Booths are available on the Concourse, if desired; please request Vendor Application (see page 9) or purchase a Prospector Sponsorship (see page 8).

### **No Smoking in the Barn**

- **Please remember:** The South Point Equestrian Center has a ZERO TOLERANCE POLICY concerning smoking in the barn! *Exhibitors in violation of this fire marshal ordinance and South Point policy may be asked to leave the show with NO refunds of any kind given by either the South Point or the Gold Rush Peruvian Horse Classic.*

## Show Schedule

### Wednesday, June 27th:

- *Facilities available for move in at 8:00 am*
- **NOTE:** *Main arena is NOT available on Tuesday, but the warm up arena is available.*

Enjoy the sights and sounds of Las Vegas!

### Thursday, June 28rd:

- **1:00 – 2:45 pm MANDATORY REHEARSAL for participants in Class 45—Freestyle Reining!!**
- **Welcome to Las Vegas Party! 7:00 pm—**Meet us just outside the arena bar for appetizers and meet and greet our exhibitors & spectators from around the world! Help us celebrate Gold Rush Classic's 12th Year. Cash bar available.

### Friday – June 29th:

#### **8:30 a.m. CLASSES BEGIN**

<b>No</b>	<b>Class Description</b>	<b>Q/NQ</b>	<b>Hi Pts/Versatility</b>
1	Geldings 4+ Gelding Stakes	NQ	
2	Mares 4+ - Zootechnico	NQ	
3	Stallions 4+ - Zootechnico	NQ	
4	Fillies 2 years Halter	6	
5	Fillies 3 years Halter	6	
6	Champion and Reserve Junior Mare	4, 5	
7	Amateur to Ride Performance Stakes	NQ	
8	Crystal Breeding 12+	69, 71, 73	
9	Colts 2 years Halter	11	
10	Colts 3 years Halter	11	
11	Champion and Reserve Junior Stallion	9, 10	
12	AOTR 4-6 Performance	65	
13	AOTR 7+ Performance	65	

#### **LUNCH**

14	Non-traditional Tack & Attire - Performance	66	V
15	Luxury Gelding 4-6	71	
16	Junior Equitation - 6 to12	NQ	JR12

<b><u>Friday Afternoon Continued</u></b>		<b><u>O/NQ</u></b>	<b><u>Hi Pts/Vers</u></b>
17	Mares 4-6 - Breeding	69	
18	Junior Equitation - 13 to 18	NQ	JR13
19	Stallions 4-6 Breeding	73,20	
20	Luxury Gelding 7+	71	
21	Novice Rider 18 + Amateur Performance	NQ	NHP
22	Mares 7+ Breeding	69	
23	Amateur to Ride Open Tack and Attire	68, 70, 72	
24	Stallions 7+ Breeding	73	
25	Reining Level 1 - Bozal only	NQ	HPB
26	Reining Level 2	NQ	V
27	Reining Level 3	NQ	V
<b><u>Saturday, June 30th: 8:30 a.m. CLASSES BEGIN</u></b>			
28	Bareback Equitation - Open	NQ	V
29	Geldings 3-4 Bozal	75	HPB
30	Junior Performance - 6 to 12	NQ	JR12
31	Amateur Performance 4-6	68, 70, 72	NHP
32	Mares 3-4 in Bozal	75	HPB
33	Amateur Performance 7+	68, 70, 72	NHP
34	Junior Performance - 13 to 18	NQ	JR13
35	Stallions 3-4 in Bozal	75	HPB
36	AOTR Breeding	65	
37	Novice Rider Equitation - Riders 18+	NQ	NHP
38	Open Performance 4-6	66	
39	Open Performance 7+	66	
<b>LUNCH</b>			
40	Junior Performance Pattern - 6 to 12	NQ	JR12
41	Junior Performance Pattern - 13 to 18	NQ	JR13
42	GRC Champagne Class	NQ	V
43	Amateur Performance Geldings 4+	68	
44	Mares Pisos 4+	67	

45	Amateur Performance Stallions 4+	70
46	Geldings Pisos 4+	67
47	Amateur Performance Mares 4+	72
48	Stallions Pisos 4+	67

***EVENING BREAK—15 minutes***

**Saturday Evening**

49	GRC Liberty Horse Open	NQ
50	Freestyle Reining Open	NQ

**Sunday, July 1st: 9:00 a.m. CLASSES BEGIN**

<b>No</b>	<b>Class Description</b>	<b>Q/NQ</b>	<b>Hi Pts/Versatility</b>
	Lead Line Exhibition - 24 Months to 6 Years		NQ
51	Junior Grooming and Conditioning 6 to 12	NQ	JR12
52	Pisos - Bozal 3-4 Yrs. Old	77	HPB
53	Junior Grooming and Conditioning 13-18	NQ	JR13
54	Gentlemen to Ride Open Performance	66	
55	Ladies to Ride Open Performance	66	
56	Produce of Dam Bit Bozal	NQ	CBA
57	Saddle Switch Stakes	NQ	
58	Get of Sire Bit/Bozal	NQ	CBA
59	Junior Bareback Equitation 6 to 12	NQ	JR12
60	Premio Aficion Bit/ Bozal	NQ	CBA
61	Junior Bareback Equitation 13-18	NQ	JR13
62	Ranch or Breeders Conjunto	NQ	CBA
63	AOTR Pisos	65	
64	Dressage	NQ	V

**LUNCH**

**Award Presentations:**

<b>High Point Junior Awards 6 to 12</b>	14 25 35 55 61
<b>High Point Junior Awards 13-18</b>	16 28 36 57 63
<b>Gold Rush Classic Versatility Horse</b>	14 (26, 27-only 1 class) 28 42 64
<b>Gold Rush Classic High Point Novice</b>	21 31 33 37
<b>Gold Rush Classic High Point Bozal Horse</b>	25 29 32 35 52

65	Champion & Reserve AOTR Horse	12, 13, 36, 63
66	Champion & Reserve Performance Horse	14, 38, 39, 54, 55
67	Best Gaited Horse of Show	44, 46, 48
68	Champion & Reserve Amateur Performance Gelding	23, 31, 33, 43
69	Champion & Reserve Breeding Mare	8, 17, 22
70	Champion & Reserve Amateur Performance Stallion	23, 31, 33, 45
71	Champion & Reserve Luxury Gelding	8, 15, 20
72	Champion & Reserve Amateur Performance Mare	23, 31, 33, 47
73	Champion & Reserve Breeding Stallion	8, 19, 24
74	Champion of Champions AOTR Horse - Performance	65
75	Best Bozal Horse of Show	29, 32, 35, 52

**Presentation of the Conquistador Breeders Aficion Award (CBA)**

56, 58, 60, 62

**Presentation of The Peruvian Horse Quarterly  
Junior Showmanship Award**

**Gold Rush Classic High Point Owner of Show**

**Gold Rush Classic High Point Breeder of Show**

76	Champion of Champions Performance Horse	66
77	Champion of Champions Amateur Performance Gelding	68
78	Champion of Champions Breeding Mare	69
79	Champion of Champions Amateur Performance Stallion	70
80	Champion of Champions Luxury Gelding	71
81	Champion of Champions Amateur Performance Mare	72
82	Champion of Champions Breeding Stallion	73

**Gold Rush Classic High Point Crystal Horse of Show**

**BARRIDA**

**OF**

**CHAMPIONS OF CHAMPIONS, BEST GAITED HORSE, BEST BOZAL HORSE,  
HIGH POINT HORSES, VERSATILITY WINNER, HIGH PT & RES JUNIOR 13 - 17\*\***

**\* Depending on Sex      \*\* If at least age 15 years and with parental consent**

**Monday – July 2:**

10:00 a.m. Check-out – All Horses Must Be Out the Stalls!

**ALL BILLS MUST BE SETTLED WITH SHOW MANAGEMENT**

### **Class Notes:**

**14—Non-traditional Tack & Attire Class:** This class will be judged as a Performance class. The tack and attire may be anything other than Peruvian and the tack and attire must match. For example, if the attire is Western, the tack must also be Western. If the tack is Spanish, the attire must also be Spanish. However, the use of the Peruvian bit is allowed with any tack and attire. Judged on 40% performance, 15% manners, 15% gait and collection, 10% brio, and 20% tack and attire.

**21, 37—Novice Riders 18+:** Riders to not have won more than 5 blue ribbons.

**23—Amateur to Ride, Open Tack/Attire:** Any combination of tack & rider attire allowed. No restriction on alternative attire colors (ie red, etc allowed)

**28—Bareback Equitation:** Bareback pads allowed, judged 100% equitation

**49—Liberty Horse:** *Limited to 10 entries*, First place awarded only. Team judged by both judges. Exhibitor to choose & bring their own music; 2 minute limit. Only one horse in the arena at any time; may have handler & assistant to help keep the horse moving and to catch at end. No one may touch the horse during the 2 minutes, but whips are allowed to help keep them moving. When music ends, the handler & assistant have 2 minutes to catch the horse. If not caught within 2 minutes, the entry is disqualified. To be judged on “liberty-like” movements—rearing, tossing head, striking, etc.

**51 & 53—Junior Grooming & Conditioning:** To demonstrate the ability of the handler to show his horse (any age) to the best advantage at halter. Juniors will be expected to stand their horse square in the line, walk horses to the rail & back, showing the horse to the judge at all times. Judges may question exhibitors on their knowledge of horsemanship & conformation. To be judged 70% on ability & knowledge of handler; 30% preparation, condition & manners.

**55—Ladies to Ride, Open Performance:** Side saddles allowed, not required.

**56 & 58—Produce of Dam and Get of Sire:** Entry MUST be made by, or with the SIGNED permission of, the owner (not lessee) of the sire or dam. Joint ownership is permitted. Only *one* entry per Sire or Dam: 3 offspring per Sire, 2 offspring per Dam; shown under saddle, bit or bozal.

**57 - Saddle Switch Stakes, Open Performance 18+:** Entry fees added to purse. Split 50% owner of 1st place horse, 50% rider of 1st place horse. Riders MUST sign release of liability upon entering class. Class consists of a Lottery Drawing to be held at start of class to determine which rider exhibits which horse. Exhibitors enter arena on horseback, each rider draws a horse number, riders to re-draw if the chosen horse is the horse they are entered on, or one they own. Show Management may re-draw a horse number for a rider if they draw a horse they regularly exhibit in competition. 5 minutes will be given for riders to mount their new horses, two warm up laps will be allowed at start of class. Horses entered should be proven performance horses, with training & ability to complete normal performance class maneuvers. Judged 40% on equitation & capability of rider, 40% performance, brio, suitability & manners, 20% gait & smoothness.

**60—Premio Aficion:** Bit or Bozal. Entry to consist of 1 mare, 1 gelding, 1 stallion, owned and bred by the same breeder/owner.

**62—Rancho Conjunto:** Bit or Bozal ~ 3 horses only! All horses *must be currently owned by the same entity*, acquired either through purchase or by breeding.

**65 & 74—AOTR Division Championships:** AOTR Championship Entries to be judged 50% on performance, brio, suitability and manners, 20% gait and smoothness, 10% on conformation and 10% condition. The overall ideal horse for an Amateur Owner is one that is well mannered, well gaited & conformed.

**66 & 76—Performance Division Championship Classes:** The judges may ask for special maneuvers &/or a pattern to challenge the exhibitors in this class

**67— Best Gaited:** 1st & 2nd place in qualifying classes 37, 39, 42 can enter

**75—Best Bozal:** 1st & 2nd place in qualifying classes 5, 6, 8, 30 can enter

#### Stakes Classes:

**1— Luxury Gelding Stakes ~ NQ, Entry fees added back to purse**

Each show awards: 1st=40%, 2nd=30%, 3rd=15%, 4th=10%, 5th=5%, Res.=0%

**7— Amateur Stakes ~ NQ, Open to Geldings, Mares or Stallions**

**- Entry fees added back to purse**

• Each show awards: 1st=40%, 2nd=30%, 3rd=15%, 4th=10%, 5th=5%, Res.=0%

**42—Champagne Cash Class:** One set of ribbons, 1st-\$150, 2nd-\$100, 3rd-\$50

**57—Saddle Switch Stakes:** Entry fees added to purse. Split 50% owner of 1st place horse, 50% rider of 1st place horse.

**Prize Money:** All Stakes purses go to the *owner or lessee* of the winning horse whose name(s) appears as such on the entry form. Champagne Class money goes to the rider. Freestyle Reining money goes to the rider.

**Champion of Champions Classes—Ch. Of Ch. Classes** will be open to the RGPCH & CCPHC Champions of the current year **PLUS** all previous years Champions from: **1**—previous CSPHC (Centennial State) & RGPCH regional championship shows, **2**—previous Champion of Champion horses from CCPHC Central Coast Classic Regional show (held in Santa Maria, CA), **3**—previous NAPHA or COMBINED NATIONALS, PPHRNA, AAOBPPH, and PHAC National Champions of Champions. *All previous Champions and National Champions of Champions going directly into Champion of Champions Classes MUST be pre-entered by 6/19/12 and pay an entry fee.*

**1. Past Champions:** A horse that is a past Champion from a club's show (see above) in any division or a past national Champion of Champions may *either* enter directly into the Champion of Champions class for that division *or* enter into the qualifying classes for that division, **but may not do both.**

**2. Laureados:** Per NAPHA rules: No stallion or mare may compete for Laureado in Breeding Division unless it has at least 1 purebred registered offspring.

**a) Laureado in one show, champion in the other show.** A horse that is Laureado in any division in one show and Champion in that division in the other show may *either* enter directly into the Champion of Champions class for that division *or* enter into the qualifying classes for that division, but it cannot do both. **If the horse is entered into ANY class in that division, it will not appear on the class sheet of the judge for the show for which it is already Laureado. (CONT.)**

The horse may become a Champion of Champions in that division, but not for the show for which it is already Laureado.

**b) Laureado in one show, *not* a champion in the other shows.** A horse that is Laureado in any division in one show but NOT a Champion in that division in another show CANNOT directly enter the Champion of Champions class for that division. It CAN ONLY enter the Champion of Champions class for that division as a Champion of the current year. **If it is entered in ANY class in that division, it will not appear on the class sheet of the judge for the show for which it is already Laureado.** It may become a Champion of Champions in that division, but not for the show for which it is already Laureado.

**c) Laureados from Centennial State Peruvian Horse Club (CSPHC)** may directly enter the Ch. of Ch. Classes and will be eligible for adjudication under either or both the RGPHC and CCPHC judges as stated above in a) and b).

### **Special Alternative Attire for Amateur, Open Performance & AOTR Performance Division**

The Gold Rush Classic, RGPHC & CCPHC, are switching things up! We are allowing an alternative attire for the Performance classes! To promote participation and allow performance competitors to try something other than the normal white attire, we have developed guidelines for other-color clothing in the Performance & AOTR Divisions. This is NOT mandatory, rather an option for those who would like to try something different!

#### **Not permitted for Breeding or Pisos Divisions!**

- Hat must be of Peruvian type as currently outlined in NAPHA rules
- Blazer or Suit Style Vest MUST be worn if wearing alternative attire – no ponchos
- Boots & Belt in colors and type as currently outlined NAPHA rules. Boots allowed to be worn outside of pants. Polinas allowed in same range of colors

#### **Alternative colors allowed :**

- Black, shades of grey (charcoal to light); browns, dark to tan/beige, khaki); shades of muted greens – olive to hunter; small pinstripes as for jackets in currently defined NAPHA rules; blues (light to dark navy), burgundy's (no bright reds), white, creams, ivory
- **Slacks/Pants:** must be sufficiently long enough to cover ankle and boot tops. Suit Pants-if sufficiently long enough. Jeans in above colors
- NO BLUE DENIM
- Split skirts or sidesaddle aprons for women as provided for in NAPHA rules, in above colors also. Shirts: - Collared, long-sleeved shirt in white or colors as outlined above (per NAPHA rules).
- **Scarves & Ties:** Traditional white scarf, Peruvian style - Bolo tie, or Western crisscross tie in above outlined colors, or Necktie, brooch.

## Class 64—Dressage

Full size instructions posted on [goldrushclassic.com](http://goldrushclassic.com) under “Show Features”

### Gaited Dressage

#### Training Level

Show Back Number: \_\_\_\_\_

		COEFFICIENT				
	TEST	DIRECTIVE	POINTS		TOTAL	REMARKS
1 A X	Enter working walk Halt, Salute Proceed paso llano	Straightness on center line and in halt; immobility; quality of walk; willing, balanced transitions.				
2 C MXF	Track right One loop	Bend and balance in turn. Shape and size of loop; changes of bend.				
3 E	Circle right 20M	Quality of gait; shape and size of circle; bend.		2		
4 MXK X	Change rein Working walk	Quality of gaits; willing balanced transition straightness on diagonal.		2		
5 Between K & A	Develop paso llano	Willing, balanced transition; quality of walk.				
6 B	Circle left 20M	Quality of gait; shape and size of circle; bend.		2		
7 HXK	Free walk on relaxed rein	Reach and ground cover of free walk; freedom to stretch forward and downward; quality and regularity of gait; willing balanced transitions; straightness on diagonal.				
8 K	Develop paso llano	Willing, balanced transition; quality of paso llano.		2		
9 A X	Down centerline Halt, Salute	Bend and balance in turn; straightness on centerline and in halt; willing balanced transition; immobility.				

Leave arena at A in walk on a long rein.

COLLECTIVE MARKS	POINTS		TOTAL	REMARKS
GAITS (freedom and regularity)		1		
IMPULSION (desire to move forward, elasticity of the steps, suppleness of the back, engagement of the hind quarters)		2		
SUBMISSION (attention and confidence; lightness and ease of movements, acceptance of the bridle)		2		
RIDER'S position and seat		1		
RIDERS's correct and effective use of the aids		1		
HARMONY between rider and horse		1		

TOTAL POINTS \_\_\_\_\_  
(max 210)

### **Peruvian Reining Series—Classes 25, 26, 27**

These are three classes that allow a wide range to horse and rider ability. The difficulty of the required maneuvers at each level increases, with level three having the required movements of the enfrenadura. **Please see the website [www.goldrushclassic.com](http://www.goldrushclassic.com) for a complete list of rules, guidelines & judges cards.**

**VERSATILITY:** The Reining Series Level 1 & 2 will qualify for the Versatility award.

**BOZAL HORSES:** In the tradition of the “Embozalador” class in Peru, Level 1 is limited to Bozal Horses.

**TACK & ATTIRE:** Approved attire for the Peruvian Reining division is the same attire approved for the Performance division, including the Alternative Attire, for level 1 & 2. It is not a “costume” class; no extra points given for attire. Tack must be traditional Peruvian tack as approved by NAPHA. A pella and spurs are required for level three.

**MUSIC:** Music is optional. No extra points given for music, but the exhibitor may use it to enhance the performance. Music on a CD must be provided to announcer no less than one day before the class.

**HORSE ENTRIES:** A horse may only enter one level at a particular show.

**RIDER ENTRIES:** A rider may enter all three levels at one show, provided they are riding different horses at each level. A rider may enter/exhibit multiple horses in the same level (standard practice with pattern type classes) at a particular show.

**POINTS:** Each required maneuver is worth 10 points and all classes do not add up to 100 points (e.g. 100%):

Level One: 80 points possible

Level Two: 120 points possible

Level Three: 180 points possible

To equalize all divisions, a multiplier must be calculated to make the classes “out of” a possible 100 points:

Level One Multiplier: 1.250 ( $1.25 \times 80 = 100$ )

Level Two Multiplier: 0.8334 ( $0.8334 \times 120 = 100$ )

Level Three Multiplier: 0.5556 ( $0.5556 \times 180 = 100$ )

Optional maneuvers are worth 10 points each but only count for 1/2 have half multipliers by level. This was done to make it easier for the judges so each maneuver is 10 points but less credit is given for optional maneuvers: **To assist the Judge in comparing performances, all maneuvers MUST BE DONE IN THE ORDER LISTED!**

**LEVEL ONE REQUIRED MOVEMENTS: Bozal horses 3-4 yrs only.** The use of two hands on the reins for bozal horses is required. The horse must execute the walk or paso llano at all times. Both gaits must be shown in the class. Maximum time allowed is 3 minutes.

***Required Maneuvers:***

- Circle in both directions (10 meters)
- Caracol (begin with 15 meter circle) with 3 revolutions to one direction
- Cuarteo one revolution to either direction
- Figure 8
- Stop and stand for at least 5 seconds,
- Back at least 5 steps.

***Optional Maneuvers:***

- Circle in either direction (5 meters)

**LEVEL TWO REQUIRED MOVEMENTS:** Bit horses, 4+ years. The use of one or two hands on the reins is permitted. Once a rider has selected to use one or two hands, they must do so throughout the entire class. Points will be deducted for switching during the performance. The horse must execute the walk or paso llano at all times. Both gaits must be shown in the class. The gallop is optional. Maximum time allowed is 4 1/2 minutes.

***Required Maneuvers:***

- Circle in both directions (5 meters)
- Caracol (begin with 15 meter circle) with 3 revolutions in both directions
- Open caracoles with 3 revolutions
- Cuarteo to either direction
- 2 figure 8s
- Stop for at least 5 seconds
- Back at least 10 steps

***Optional Maneuvers:***

- Surge
- Touch horse's nose to stirrup at the inside of the caracole

**LEVEL THREE REQUIRED MOVEMENTS:** Bit horses 4+ yrs. Rienda pareja is preferred, but rienda coja is permitted. Rider must continue with either selection throughout the performance. The horse must execute the walk, paso llano or gallop at all times. All three gaits must be shown in the class. Tack & attire must include white clothing, Peruvian hat, white scarf, poncho folded & placed on saddle, pella & Peruvian spurs. Maximum time allowed is 6 minutes.

***Required Maneuvers:***

- Circle in both directions (15 meters)
- Caracol (begin with 15 meter circle) with 3 revolutions to both directions
- End caracol with cuarteo (2 revolutions) both times
- Touch horse's nose to the stirrup 3 times during cuarteo
- Open caracol in both directions with 3 revolutions
- 2 figure 8s
- Figure 8 while touching horse's nose to stirrup 3 times in each direction
- Stop and stand for at least 5 seconds
- Back at least 15 steps
- Figure 6 in either direction at gallop

***Optional Maneuvers:***

- Surge
- Walk while touching horse's nose to stirrup in both directions

## **2012 FREESTYLE REINING CLASS #50**

### **OFFICIAL COMPETITION RULES AND REGULATIONS**

- Freestyle reining is a judged event designed to show the athletic ability of the horse within the confines of a show arena. Freestyle Reining not only provides an opportunity to use maneuvers creatively, but also to expand them to music by means of choreography. Competitors are encouraged to use music that permits them to show the athletic ability and showmanship of the horse in a crowd-appealing fashion. Music is mandatory and will be provided to the sound and lighting staff by the competitors.
  - Competition is open to both amateurs and professionals, and the competitor must be 18 years of age or older.
  - Horses utilized in this competition must be purebred Peruvian Horses of any sex or age which are registered with a NAPHA approved Registry.
  - There is a limit of two horses with riders (or a pair) allowed per entry.
  - The time limit of each performance is a maximum of 3 minutes. Timing of the performance will start at the beginning of the music. Competitors should complete their routines by the time the music ends and 3 minutes has elapsed. Failure to complete the performance within the time limit will result in points deducted from the total score.
  - Costumes are encouraged that match the music and style of the performance. Emphasis, however, should be placed on the quality of maneuvers selected and execution of these. Remember, your ability doesn't depend on what you wear, but it never hurts to make a good impression and WOW the crowd!
  - Gold Rush Classic will reserve the right to rule on music or dress that may be considered inappropriate or offensive to the spirit and nature of the event. Gold Rush Classic will also determine the use of special lighting as appropriate to the performance and what the horse can handle to perform properly.
  - Props are permitted in the arena which would include additional people or objects placed inside the arena to enhance the performance.
  - Competitors are encouraged to utilize the entire arena,
  - There are NO required maneuvers. All elements such as side pass, caracoles, figure eights, backing, stops, Spanish walk, bowing, speed variations of gait, etc will be left to the artistic discretion of the competitor and appropriate credit will be given as to the quality of execution of the exhibitor. Elements can be performed in any order within the time limit.
  - Spurs are optional.
  - Competitors can select to ride in any saddle type and/or head gear of their choosing, including none at all. No tack or headgear requirements.
- There will be (3) Judges for this event. Judging will be calculated as follows:
- 40% Quality of the execution of selected maneuvers, including degree of difficulty, with correctness and smoothness
  - 20% Disposition and quality of training of the horse.

- 20% Artistic impression and selection of maneuvers as choreographed with the music.
- 10% Crowd appeal
- 10% Overall impression of the routine.
- All decisions by the Judges are final. All scores of the Judges will be considered in awarding the top three prizes.
- Competitors will be required to complete a W-9 form and a South Point Equestrian Center Release of Liability at the time they pick up packets from Show secretary. All prize money shall be awarded after horses have been cleared by the drug testing results. Prize money shall be sent via first class mail to the person designated on entry form as the competitor (that is the rider).
- Any Judge(s) may excuse a horse at any time while in the arena for unsafe conditions, improper exhibition pertaining to either the horse and/or competitor, or lameness. This also includes blatant disobedience, such as kicking, biting, bucking, or striking.
- There will be a MANDATORY REHEARSAL for all competitors on Thursday, June 28, 2012 from 1:00-2:45pm. This rehearsal is to coordinate sound/lighting and special effects with your performance and timing cues, etc

**First Place: \$1500**

**Second Place: \$1000**

**Third Place: \$750**

**Forth Place: \$550**

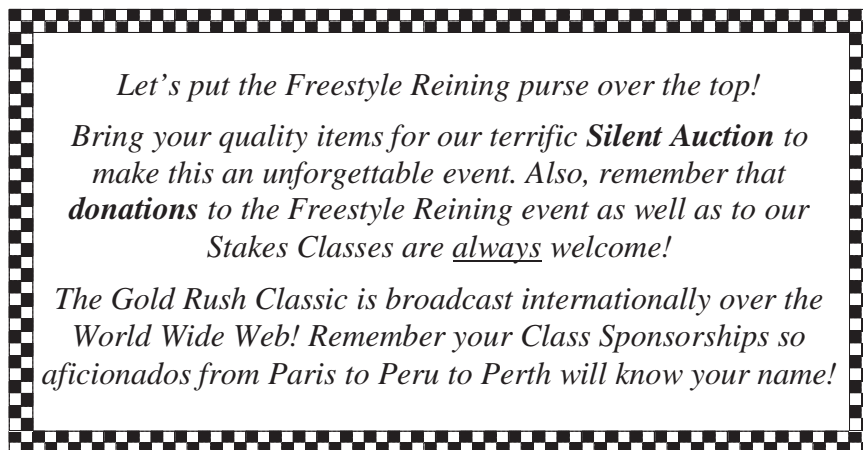
**Fifth Place: \$350**

**Sixth Place: \$150**

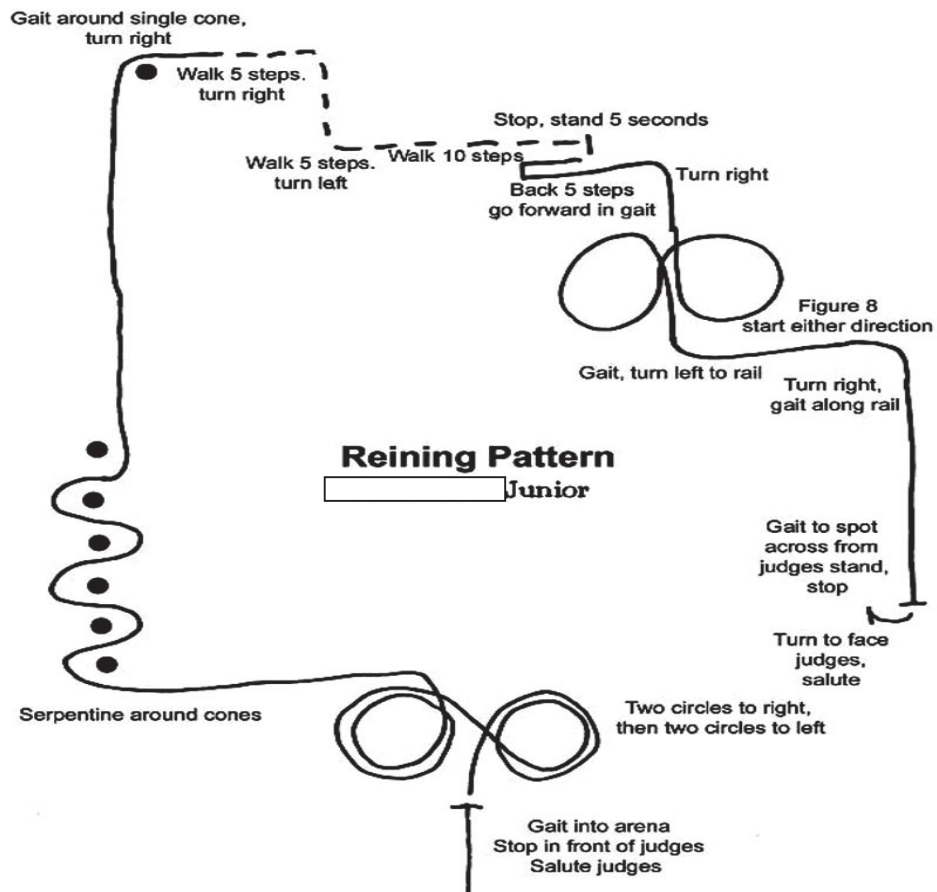
**People's Choice Award—chosen by audience applause**

**Attention! MANDATORY REHEARSAL is Thursday from 1:00 – 2:45 pm. You MUST attend Rehearsal to participate! No entry will be allowed nor fees refunded if you do not attend the Rehearsal!**

**Entry deadline—10 am Thursday, June 28th**



## Class 40-41—Junior Pattern



## Special Awards

**Declaration to compete for High Point Awards:** Must be designated on entry form before start of show to have points counted - NO EXCEPTIONS!

### Gold Rush High Point Versatility Horse

- Points counted in classes 14, 26, 27, 42, 64 (26,27 - only 1 class)

**GRC High Point Breeder:** Points will be counted from the horse or horses BRED by that person or their ranch. *Competition for this award is limited to the exhibitors who have entered these horses in the show.* Club memberships not required.

**GRC High Point Owner:** Points will be counted from all horses entered by that owner. Club memberships not required.. Only horses registered to the owner qualify.

### Conquistador Magazine Breeders Aficion Award

- *Donated & sponsored by Conquistador Magazine, to encourage participation & to award excellence in the Premio, Conjunto, Produce of Dam & Get of Sire classes.*
- Points counted in classes 56, 58, 60, 62.

### Gold Rush Classic High Point Novice Rider 18 & Over:

- **Novice rider is defined as having won 5 or fewer 1st ribbons in a Peruvian Show**
- Required classes: 21, 37. Points counted in 21, 37, (31, 33, 43, 45, 47 only 1 class). Novices must sign entry form certifying they are a Novice for the 2012 show season.

### Peruvian Horse Quarterly Junior Showmanship Award

- This is awarded to the Junior that not only excels in the show arena but also displays good horsemanship and sportsmanship both in and out of the arena. Judges of this specific award may ask Juniors at any time during the show about their horse, its tack, grooming and caring for their horse and observe juniors' sportsmanship towards others. All of this will be taken into consideration when awarding this trophy. A short test on basic horse conformation will also be required.

### High Point Crystal Horse

- Awarded to the high point horse 12 years of age and older.
- Points counted in all classes, (except Junior Classes) including championships

**High Point Ties:** Any high point ties for any high point award, including juniors shall be broken by number of 1st, 2nds, etc. won. Any ties past placings are determined by judges.

### Juniors—Special Notes:

• **Junior riders ages 18 & under MUST wear a helmet in ANY class entered! ABSOLUTELY NO EXCEPTIONS!** No Junior will not be allowed to enter the arena for ANY class without a helmet! *Nevada law.*

• Per NAPHA rules, the age divisions are 6 to 12 years and 13 to 18 years. For Lead Line, the Junior must be at least 24 months old BEFORE the class and up to 6 years old.

• Per NAPHA: retrancas are prohibited, baticola is required, floron is optional. No ungelded colts over 12 months old are allowed in any Junior class. Juniors must be at least 15 years old to show stallions in adult classes or to ride in the Barrida.

### Bozal Horses—Special Notes:

• GRC now offers \*3\* classes for each bozal horse! Gelding, Mares, Colts; Bozal Pisos; & Reining Level 1

• 1st & 2nd Place in classes 29, 32, 35, 52 qualify for Best & Res. Bozal Horse of Show.

• All 3 classes open to Bozal horses Qualify for High Point Bozal Horse of Show.

# Our Host Hotel

Hotel.Casino.Spa



**9777 Las Vegas Blvd. So. ~ Las Vegas, NV 89183**  
**At S. Las Vegas Blvd. & Silverado Ranch Blvd.**

*From I-15 take Exit 31 for Silverado Ranch Blvd. As you exit, stay right and make your first right into South Point's parking lot! From rental car terminal at McCarran Airport go south on Gilespe St.; right on E. Warm Springs Rd.; left onto Las Vegas Blvd. South*

**WWW.SOUTHPOINTCASINO.COM \* Directions online or call 866.796.7111**

**To reserve online & get our special rate, be sure to put GOL0621 in the group code box.**

Oversize rooms with giant plasma TVs (watch the show in your room!) · Custom sheets, mattresses & spatioletries · Wireless Internet access · MP3 Player plugin · Landscaped pool area · Business center · Men's & women's full-service spas · Salon, barber shop · Fitness center 16 screen state-of-the-art Cinema · 64 lane bowling alley · Casino & Sports Book · Bingo parlor · Video arcade · Incredible restaurants: steaks & ribs, seafood, Italian, Mexican, buffet & Michael's · Showroom with top-name entertainment, music & dancing · Concierge & shuttle

**Tues, Wed, Thu, Sun \$45 ~ Fri, Sat \$75 plus 12% tax**

Up to 2 persons; \$20 extra per night for 3-4 persons age 15 & over. Must be 21+ to reserve a room!

***You MUST say you are with the GOLD RUSH PERUVIAN HORSE CLASSIC to get our rate!***  
***ROOMS ARE LIMITED! Reservations made after the cutoff date/time are subject to South Point's prevailing rates and room availability —BOOK NOW!***

**DEADLINE to RESERVE Our Special Rate: May 27th at 5:00 a.m.**

**1-866-791-7626**

QTY	Fees	Before/On 6/8/12	After 6/8/12	Totals
	Exhibitor Entry Fee – <i>Per Horse</i>	35.00	55.00	
<i>(Includes office fee, security fee, drug testing fee; \$20 late fee after 6/8/12)</i>				
	Stalls – Horse Stall or Tack Stall – <i>Includes 4 bags shavings each stall</i>	165.00	180.00	
<i>(South Point requires 4 bags for <b>EVERY</b> stall = \$125 stall fee, \$40 initial bedding)</i>				
	Shavings – <i>Purchase from South Point ONLY, Per Bag</i>	10.00	10.00	
--	Hay – <i>Purchase from South Point</i>	<i>Market Rate</i>		
	Junior Classes (Lead Line is FREE)	40.00		
	Regular Classes; Liberty Horse Class; Champagne Cash Class	50.00		
	Saddle Switch Stakes; Produce of Dam – <i>2 Horses in Entry</i>	60.00		
	Get of Sire, En Conjunto, Premio Aficion – <i>3 Horses in Entry</i>	65.00		
	Amateur Stakes; Gelding Stakes	100.00		
	Freestyle Reining Class	125.00		
--	Best Bozal; Best Gaited; Championship; Ch. of Champions	---	60.00	By Invoice
	Ch. of Ch. Class - Prequalified – <i>Per Class Horse is also entered in regular class(es)</i>	60.00	<i>Must Pre-enter by 6/19</i>	
	Ch. of Ch. Class - Prequalified – <i>Per Class Horse NOT entered in regular class(es)</i>	100.00	<i>Must Pre-enter by 6/19</i>	
RGPHC Dues: \$35 Family \$25 Aficionado		→	→	
CCPHC Dues: \$30 Family \$15 Individual \$10 Junior		→	→	
Stakes Donations – <i>Total far right</i>		#1 \$	#7 \$	
Sponsorships – <i>List class numbers at right →</i>		#		By Invoice
<b>TOTAL:</b>				
	<b>Welcome to Las Vegas Party! – Put number to attend in box at LEFT</b>			FREE!

**MAKE CHECKS PAYABLE TO: GOLD RUSH CLASSIC**  
**MAIL ENTRY WITH REGISTRATION FORM COPIES AND FULL PAYMENT TO:**  
 GOLD RUSH PERUVIAN HORSE CLASSIC  
 NICOLE PICHEL – PO BOX 827 · BUELLTON · CA 93427  
**OR FAX WITH VISA/MASTERCARD TO 505-852-0743**

NAME ON CARD \_\_\_\_\_

(CIRCLE ONE) VISA    MASTERCARD    TOTAL DUE: \_\_\_\_\_ CVV: \_\_\_\_\_

NO. \_\_\_\_\_ EXP. DATE: \_\_\_\_\_

SIGNATURE \_\_\_\_\_

**GET OF SIRE/PRODUCE OF DAM**

By my signature below as Sire/Dam Owner or Legal Agent, I hereby give permission to enter Get of Sire or Produce of Dam under the Sire or Dam below:

SIRE: \_\_\_\_\_

DAM: \_\_\_\_\_

\_\_\_\_\_  
 OWNER OR LEGAL AGENT

DATE: \_\_\_\_\_

**Responsibility and Waiver:** This entry blank constitutes an agreement that the person making it, and the horse(s) entered, shall be subject to all the rules and regulations of the North American Peruvian Horse Association (NAPHA) and the Rules of the Show. The undersigned agrees to hold the Show, the NAPHA, and their officials, directors, and employees harmless for any action taken. The undersigned certifies that every horse, rider, and/or handler is eligible as entered and agrees for himself and his representatives to be bound by the Bylaws and Rules of the NAPHA and this Show.

The undersigned certifies that he/she is the owner, or duly authorized agent for the owner, of each of the horses listed hereon. It is further certified that the undersigned has read and is familiar with the premium list published in connection with this show and the NAPHA Show Rules, Peruvian Paso Breed Standards, and Official Rules & Regulations of Showing the Peruvian Paso Horse and agrees to be bound by all of the rules and conditions including, but not limited to, those which discuss liability, risk, damage, injury, responsibility, and indemnity.

The undersigned also hereby agrees to hold harmless the Boards and Members of the Rio Grande Peruvian Horse Club and/or Central Coast Peruvian Horse Club; the Peruvian Horse Association of Canada; the South Point Hotel, Casino & Spa; the South Point Equestrian & Events Center; the City of Las Vegas, Clark County, and/or the State of Nevada, for any injury or damages that may result from participation in the 2012 Gold Rush Peruvian Horse Classic. **The undersigned also agrees that he/she and all adults attending the show as exhibitor, groom, trainer, handler, rider, or in any capacity other than spectator, will sign the South Point Equestrian Center Liability Release.**

Owner/Agent \_\_\_\_\_ Print Name \_\_\_\_\_

DATE: \_\_\_\_\_ PHONE: \_\_\_\_\_ E-MAIL: \_\_\_\_\_

ADDRESS: \_\_\_\_\_ CITY/ST/ZIP: \_\_\_\_\_

**PARENT/LEGAL GUARDIAN OF ANY PARTICIPATING MINOR MUST SIGN BELOW AND SIGN SOUTH POINT JR. RELEASE!**

I hereby agree to the participation of my minor child in the events sponsored by the 2012 Gold Rush Peruvian Horse Classic and assume all risks and liabilities associated with those activities. I also am aware that NO Junior, as defined by NAPHA Show Rules, will be permitted in ANY class or clinic without an approved, properly-fitted helmet (Nevada Law). **Junior age 15+: May Jr. ride in a Barrida (including during a class)?** YES NO

DATE: \_\_\_\_\_

PARENT OR LEGAL GUARDIAN \_\_\_\_\_

**NOTE: PLEASE DO NOT SEND THIS SHEET BY ITSELF! Your ENTRY IS NOT COMPLETE UNLESS REGISTRATON COPIES & FULL PAYMENT ARE ENCLOSED AND THE ENTIRE ENTRY FORM, BOTH SIDES, IS COMPLETED AND SIGNED. ONE RECORDED OWNER PER ENTRY FORM.**

<u>Junior - List Age on Jan 1, 2012</u>	<u>Crystal Horse</u>	<u>Novice Rider</u>	<u>Hi Point Bozal Horse</u>	<u>Versatility Horse</u>

[illegible]

Office use	Registered Name of Horse	Reg #	Age	Sex	Class Number(s)								Rider	Fee
<u>Title: (Champion or Ch of Ch.)</u>		<u>Division:</u>		<u>Show &amp; Year: Rio Grande Centennial State Central Coast GRC Central Coast Regional National</u>										
<u>Title: (Champion or Ch of Ch.)</u>		<u>Division:</u>		<u>Show &amp; Year: Rio Grande Centennial State Central Coast GRC Central Coast Regional National</u>										
<u>Title: (Champion or Ch of Ch.)</u>		<u>Division:</u>		<u>Show &amp; Year: Rio Grande Centennial State Central Coast GRC Central Coast Regional National</u>										
<u>Title: (Champion or Ch of Ch.)</u>		<u>Division:</u>		<u>Show &amp; Year: Rio Grande Centennial State Central Coast GRC Central Coast Regional National</u>										
<u>Title: (Champion or Ch of Ch.)</u>		<u>Division:</u>		<u>Show &amp; Year: Rio Grande Centennial State Central Coast GRC Central Coast Regional National</u>										

Class #	Name of Sire, Ranch, Breeder or Dam	Type	Reg #	Fee
	Horse 1	Reg #	Rider	
	Horse 2	Reg #	Rider	
	Horse 3	Reg #	Rider	
Class #	Name of Sire, Ranch, Breeder or Dam	Type	Reg #	Fee
	Horse 1	Reg #	Rider	
	Horse 2	Reg #	Rider	
	Horse 3	Reg #	Rider	
Class #	Name of Sire, Ranch, Breeder or Dam	Type	Reg #	Fee
	Horse 1	Reg #	Rider	
	Horse 2	Reg #	Rider	
	Horse 3	Reg #	Rider	

*Print additional copies of this form at [www.goldrushclassic.com](http://www.goldrushclassic.com)*